

Available Space

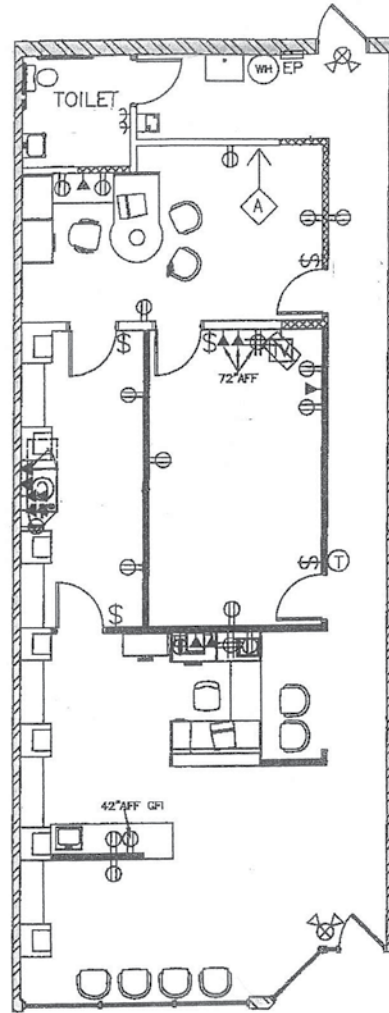
3798 W Centre Ave, Portage, MI 49024



Recently renovated, Woodbridge Village is a charming and conveniently located neighborhood center just one mile east of US 131 on Centre Avenue. This 65,000 SF project offers a great merchant mix and excellent demographics with Phase 3 now offering pad site, build-to-suit opportunities.

3798 W Centre Ave,
Portage, MI 49024

1,600 SF





WOODBIDGE VILLAGE



Suite Number And Tenant	Address	Square Footage	Dimensions
1 Handbags	3750 W. Centre Ave.	31,070 Sq.Ft.	186x125 +
2 McIntyre's Salon	3758 W. Centre Ave.	3,161 Sq.Ft.	31x64 +
3 OrangeTheory Fitness	3762 W. Centre Ave.	3,378 Sq.Ft.	32x102
4 Design Details	3766 W. Centre Ave.	3,256 Sq.Ft.	32x102
5 Fiesta Burrito	3774 W. Centre Ave.	2,234 Sq.Ft.	30x76
6 AVIARIA	3798 W. Centre Ave.	1,600 Sq.Ft.	25x64
7 Little Caesars	3814 W. Centre Ave.	1,607 Sq.Ft.	25x64
8 Subway	3822 W. Centre Ave.	1,010 Sq.Ft.	18x56
9 Zingo	3830 W. Centre Ave.	1,013 Sq.Ft.	18x56

Suite Number And Tenant	Address	Square Footage	Dimensions
10 Big Apple Bagels	3838 W. Centre Ave.	2,322 Sq.Ft.	29x74 +
11 Handen Orthodontics	3910 W. Centre Ave.	1,825 Sq.Ft.	35x55
12 West Michigan Chiropractic	3920 W. Centre Ave.	1,426 Sq.Ft.	26x55
13 Porrage Orthopedics	3930 W. Centre Ave.	1,425 Sq.Ft.	26x55
14 Ud0	3940 W. Centre Ave.	1,396 Sq.Ft.	25x55
15 Fieldstone Grill	3970 W. Centre Ave.	6,365 Sq.Ft.	67x98
16a Tiller Investments	3810 W. Centre Ave.	1,521 Sq.Ft.	52x30
16b Center For Vein Restoration	3810 W. Centre Ave.	1,900 Sq.Ft.	52x75
17 Lake Michigan Credit Union	4100 W. Centre Ave.	3,053 Sq.Ft.	42x70